

Redland Organic Growers Inc.

10th Anniversary Christmas
Organic Feast.

2008 - 2018

Photographic events
through the years.



 Redland
Organic
Growers Inc

www.rogi.com.au



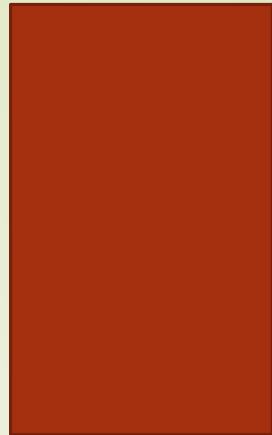
ROGI Launch

About 100 enthusiastic people attended the launch of ROGI – Redland Organic Growers Inc on Tuesday night, 7th October 2008 at IndigiScapes.

ROGI is an initiative of Emma Baker, a long-term supporter of BOGI (Brisbane Organic Growers Inc).

Graham Crombie, President of BOGI was guest speaker providing potential members with a history of organic gardening; outlining the benefits of organic grown produce as opposed to so called traditional methods.

He also offered ROGI ongoing support from BOGI.



Emma recommended that:

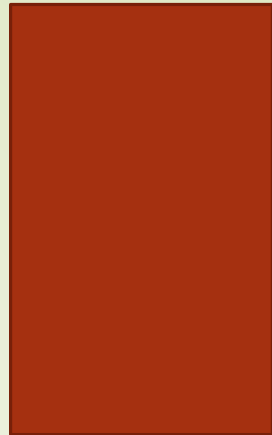
- a Standing Committee be formed to perform the functions of an Executive Committee for a period of 6 months (nomination forms were distributed); and
- monthly meetings be held and for members to agree on a permanent day and venue.

ROGI, with participation and contribution from members, will be an ongoing success and provide the Redlands community with information, advice and support.

The benefits of membership are numerous – see “WHY ROGI?” in the next column.

So please, get your membership applications in and let's get started.

Membership Fees are: \$30 Single; \$50 Family; \$20 Pensioner.



ROGI's Second (November) Meeting

Convenor Emma Baker opened the meeting welcoming everyone attending for their first time at this second meeting and those who attended the Inaugural Meeting.

She announced the commencement of ROGI's shop with many books and organic products such as worm wee, pyrethrum spray, seaweed spray, fish emulsion and fruit fly attractant for sale.

Emma also thanked Gillian for the seed bank containing a wide variety of seeds for sale.

Emma advised the ROGI survey results from the Inaugural Meeting highlighting the most common members' opinions of the benefits of ROGI membership:

- community involvement and friendship
- growing our own vegetables etc
- information available from guest speakers
- sharing skills and knowledge

Survey participants also stated a preference for monthly meetings to be held on the first Tuesday of each month at Indigiscapes at 6.30pm.



➤ Election of Standing Committee

As advised at the Inaugural Meeting on 7 October 2008, it was agreed that a Standing Committee be elected to operate ROGI for the next six (6) months when a General Meeting will be held and an Executive Committee will be elected.

The Standing Committee was elected as follows:

- President: Emma Baker
- Secretary: Linda Barrett
- Treasurer: Nathan Baker
- Bookshop: Carmen Jamieson
- Seed Bank: Gillian Cooney
- Newsletter: Bronwyn Elliott & Debra Henry
- Publicity: Elise Parrups



No Photos sourced for 2009



 Redland
Organic
Growers Inc
www.rogi.com.au



Photos sourced for 2010



 Redland
Organic
Growers Inc

www.rogi.com.au



Jerry Coleby-Williams Garden Visit

A Morning with Jerry



ROGI Redland Organic Growers Inc
www.rogi.com.au



Francois Grobler's Field Day:
Making cement garden
surrounds and water
gardens.



Redland City Council's Australia Day Awards
Several members of ROGI were nominated in various categories.

ROGI Founder and President Emma Baker (Environment Category); Paul Bishop ROGI Web Design and Publicity (Cultural Category); ROGI Member & Oakland Street Community Garden Guru Tony Chapman (Local Hero Category); and (yours truly) Debra Henry ROGI Co-Newsletter Editor (Environment Category).

Tony Chapman was announced as Redland City's "2010 LOCAL HERO".



Francois teaching us to
make wicking boxes on the last day of Autumn.



Photos sourced for 2011



 Redland
Organic
Growers Inc

www.rogi.com.au



July Field Trip - "UNNS - Omega to the Top" by Helen Hart and Bron Elliott



ROGI Redland
Organic
Growers Inc
www.rogi.com.au



Sourdough and Fermented Food Workshop



1st ROGI
Seed
Series
Workshop

2011 Oaklands Street Open day ROGI Stall

Emma Baker, Terry Sullavan
Helen Hart, Mandy Harrison



Field Trip
Shelley Marshall &
Linda Watts





Photos sourced for 2012

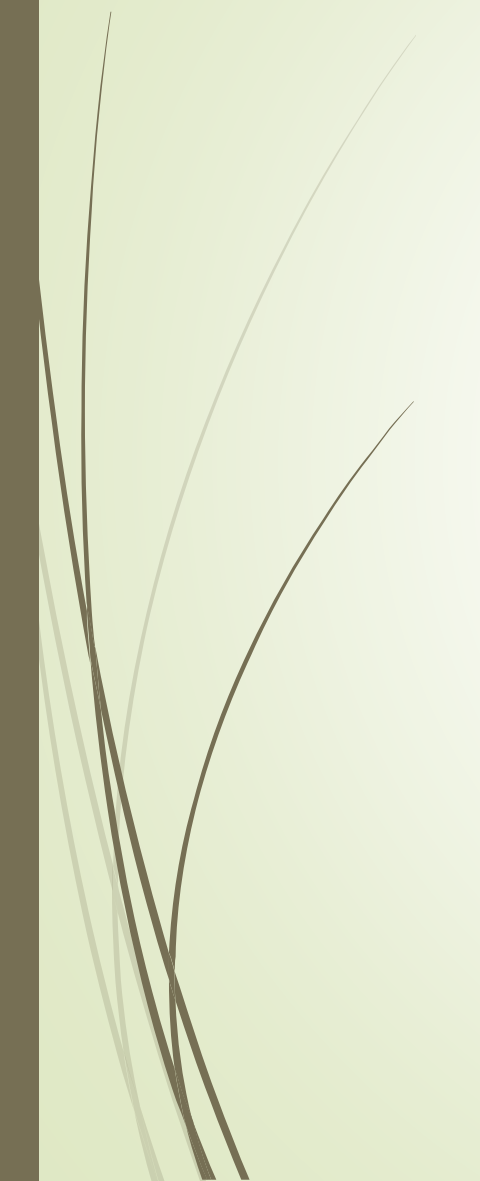


 Redland
Organic
Growers Inc

www.rogi.com.au







Photos sourced for 2013



 Redland
Organic
Growers Inc

www.rogi.com.au





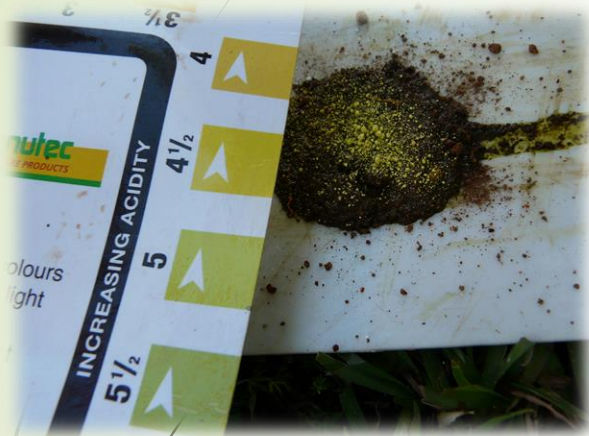
Indigiscapes Garden Expo







August Soil test Workshop & Garden Visit





Gennaro's Garden Visit December





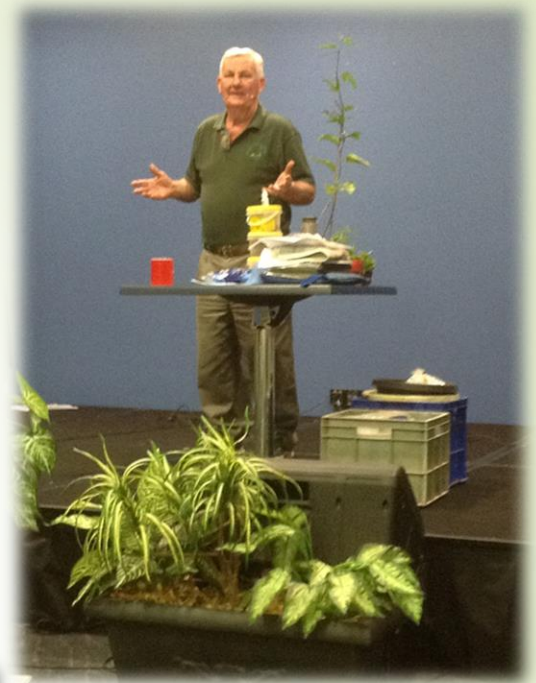
Photos sourced for 2014



 Redland
Organic
Growers Inc

www.rogi.com.au







Salvation
Army
Makeover
February





Roman Spur
"Spurtopia"
March

Garden Visit to Jocelyn BOGI





Frank & Marion's Garden

Margaret Sear's Garden March







Lunar
Farm
June





Jan Haughton's Garden May





Zaytuna Farm September



Zaytuna Farm



Zaytuna Farm



Photos sourced for 2015



 Redland
Organic
Growers Inc

www.rogi.com.au



Mudbrick Cottage Mudgeeraba







Mudbrick Cottage



ROGI supported Open Day at Oakland Street
Community Garden with Jerry Coleby-Williams







Organic Growers Inc

to ENCOURAGE
GROW AS MUCH of
FOOD as possible
ENJOY doing it.

- Library books
- Garden visits
- Discount seeds
- Garden products
- Local gardening experts
- Swap/Share/buy

www.rggi.com.au



Good Garden Expo Indigiscapes





Photos sourced for 2016



 Redland
Organic
Growers Inc

www.rogj.com.au





Irrigation Workshop & Garden Visit

February

Margaret Sear @
Capalaba

Lindsay Peel – Irrigation.





Lindsay
explaining the
automatic
system from
tanks to
garden with
mains water
backup
connection





Lindsay explains
main flow lines

and bed drip
lines





Learning to join pipes to flow line

Preparing asparagus bed in bathtub









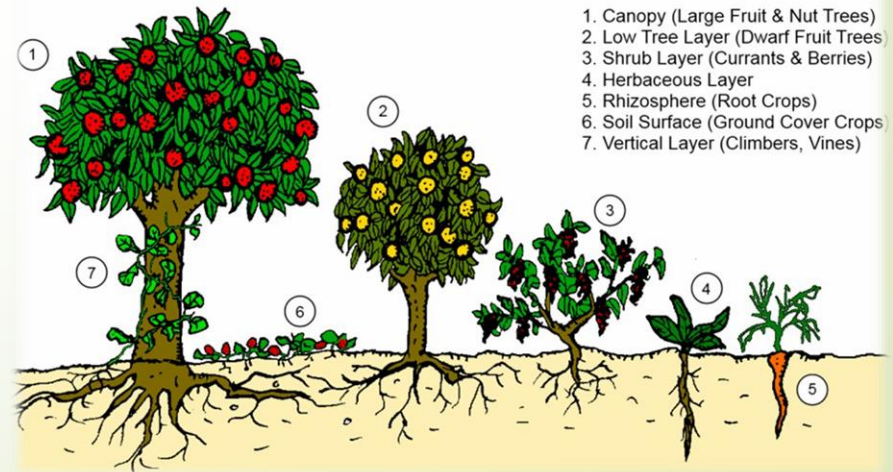
ROGI Meeting Presenters

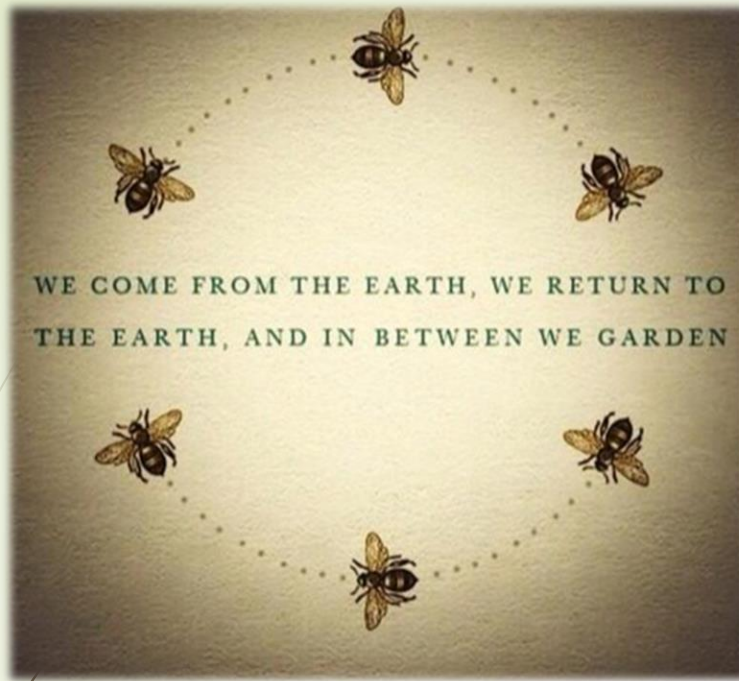
Holly Smith: March.

Companion Planting.

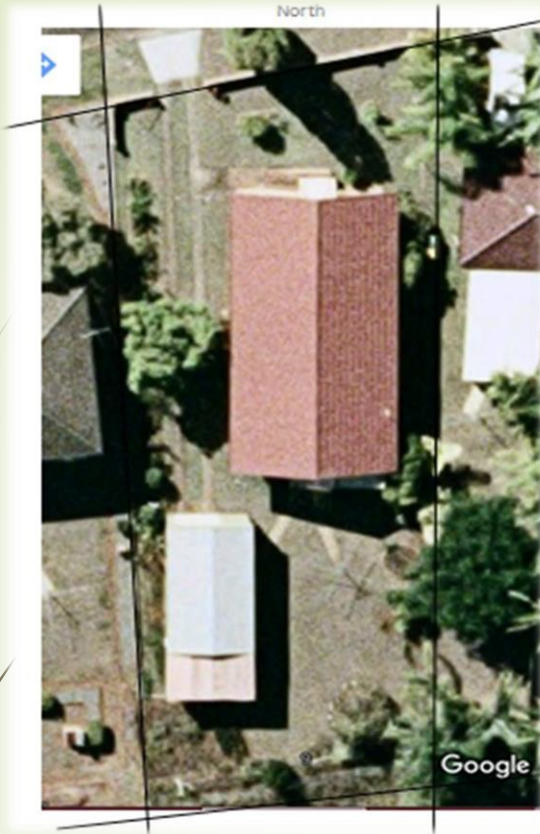


The Seven Layers of a Forest Garden





Garden Visit. Jill & Ian Nixon.



March.
Plus Design
Workshop





Naomi Wynn from Balance Garden Design shows members how to lay out a garden.



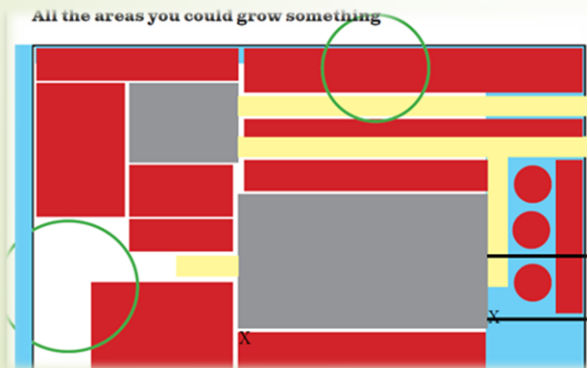
ROGI Meeting Presenters



**The way something is made or
arranged**



Repetition, combination and scale



Naomi Wynn: April.

Designing a Garden.



Good Garden Expo.



April.
@ Indigiscapes



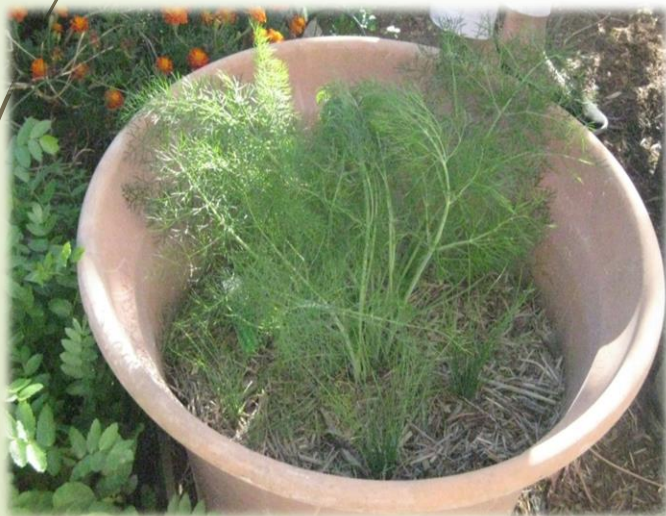


May.

Garden Visit. Bronwen Thomas.











ROGI presence at SMBI FOGG Grant Cheque Presentation Ceremony.

May.



ROGI Meeting: May. Round Robin Activity Stations.





ROGI Meeting Presenters



Simone Jelley: June

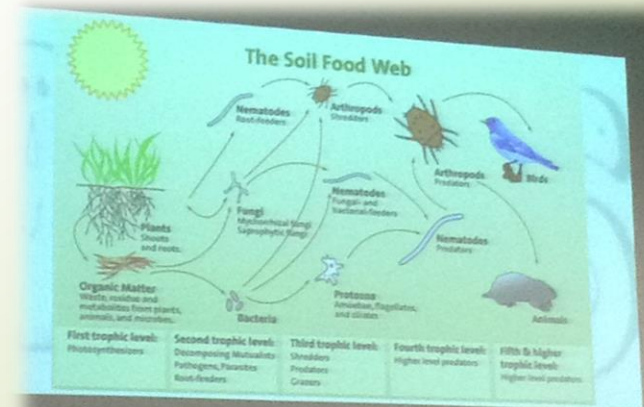
Just What Is Edible?

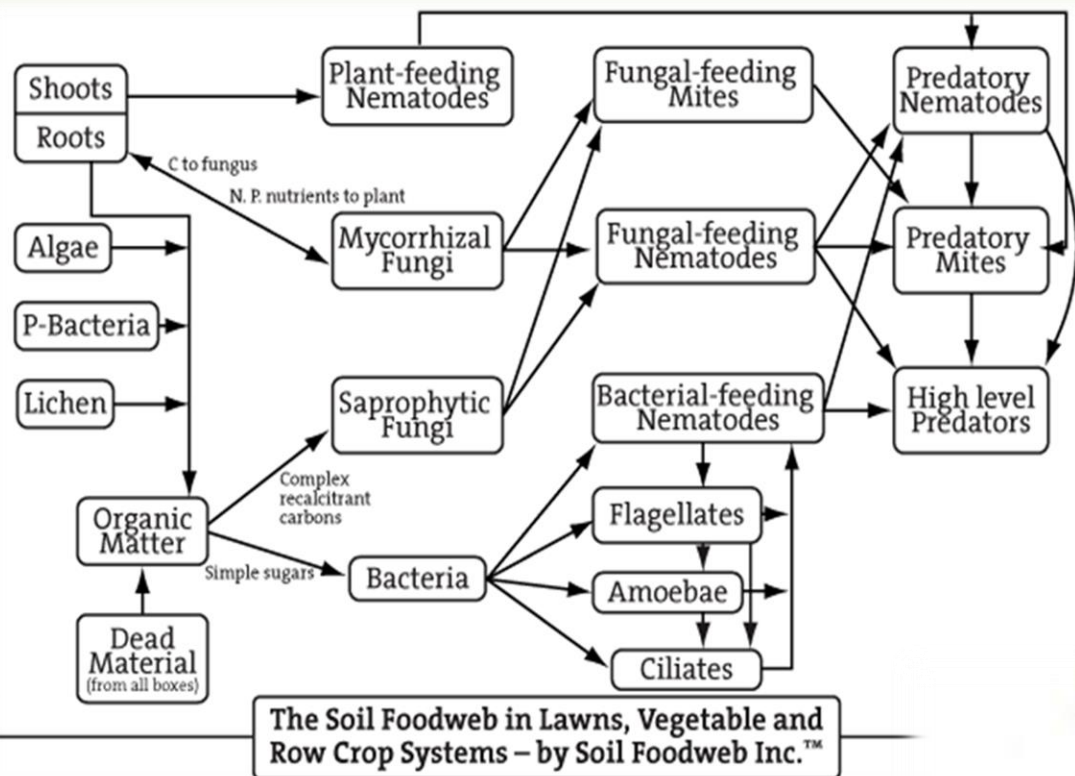
Leaves, Weeds, Flowers, Trees & Shrubs.

ROGI Meeting Presenters



Shane Gishford: July.
Soil Food Web and Micro-organisms.





ROGI Meeting Presenters



Shane Gishford:
Fruit and Vege

Sharr Elson: July.



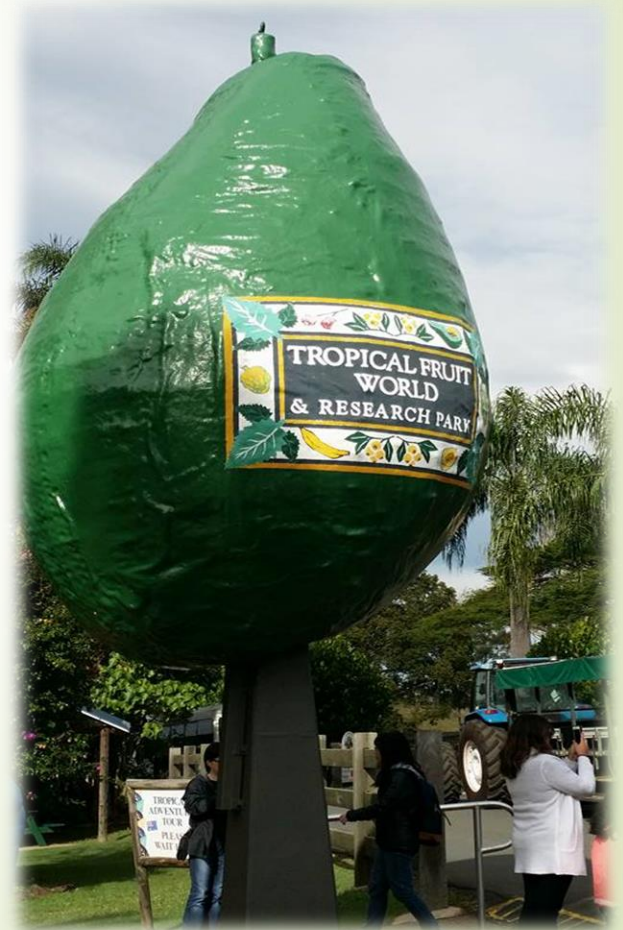
Emma Baker: August.
Sensory Gardens.



Tropical Fruit World.

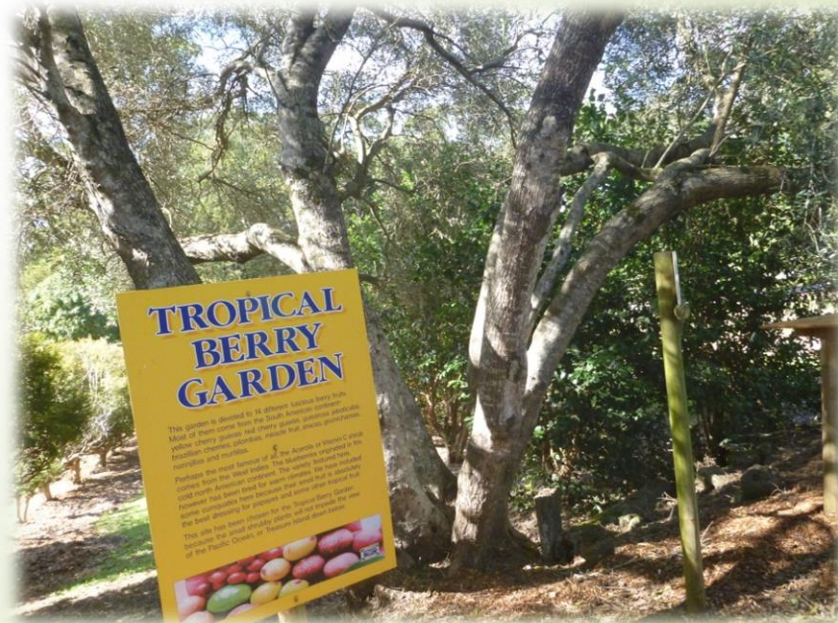


July











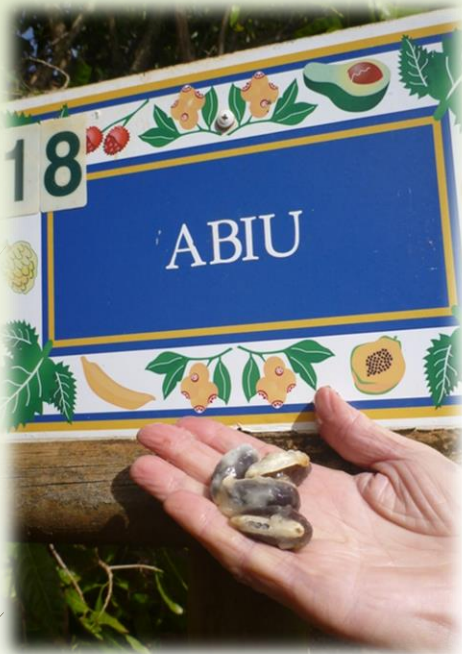




Fruit tasting along
the way











ROGI Garden Visit



Sharr Elson's
Garden:
June







Salve Making
workshop @
garden visit







ROGI Garden Visit



Gail Bruce:
July



















ROGI Field Visit: SMBI Visit to Lamb and Karragarra Islands. July

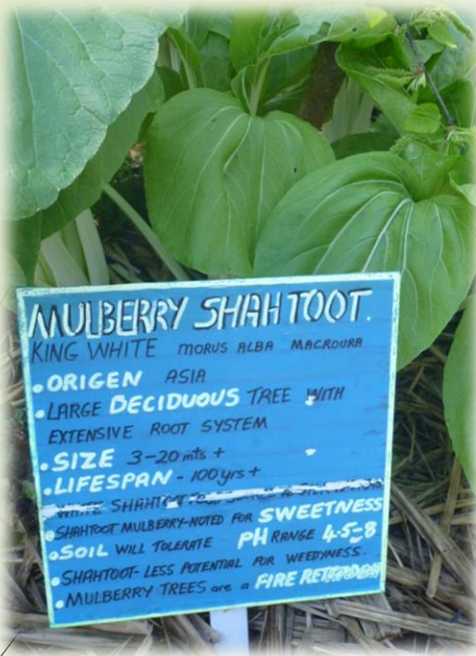


































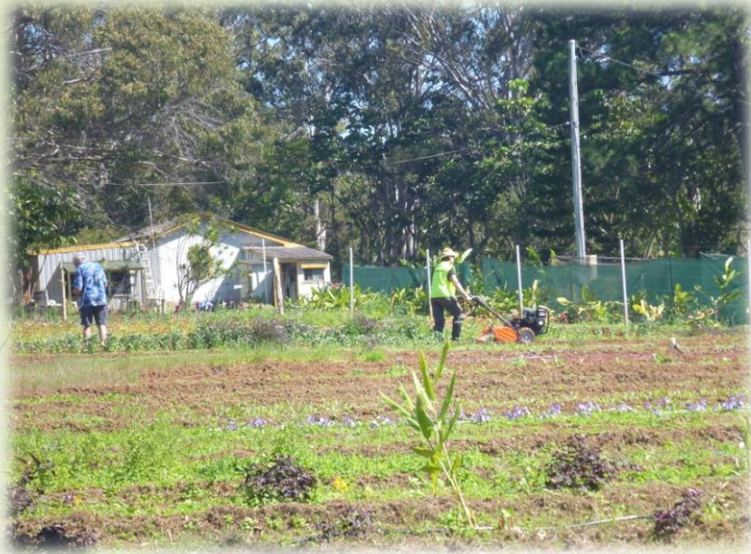






Lamb Island











Kemp
Killerby
Field Trip



ROGI Garden Makeover Winner



October.
Bryce and Wendy Stanway

















Green Heart Fair

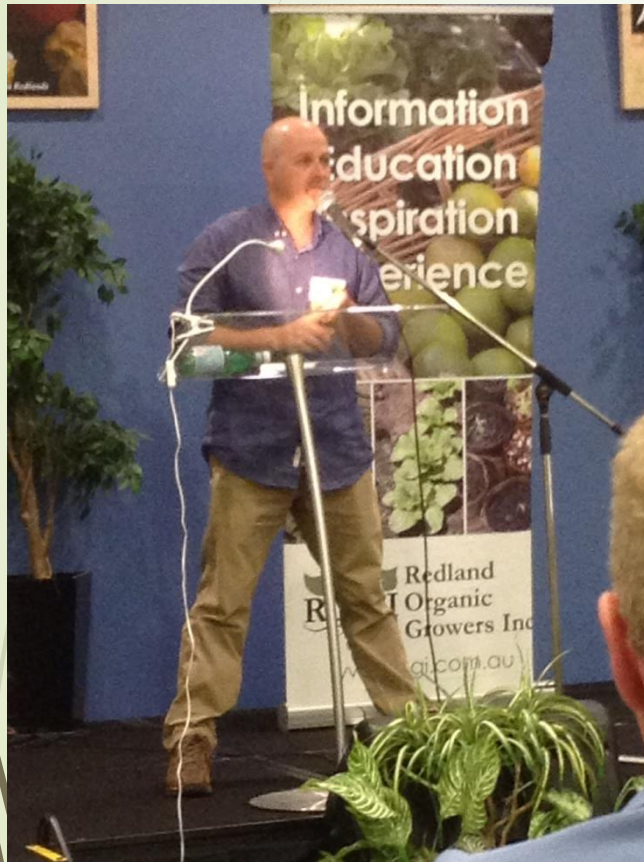


September

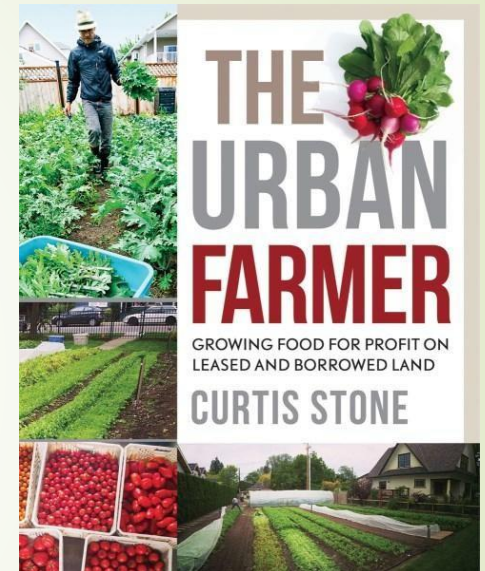




ROGI Meeting Presenters



Green Dean: September.
Urban Farming



ROGI Field Trip Event.



Whepstead Manor.
November.











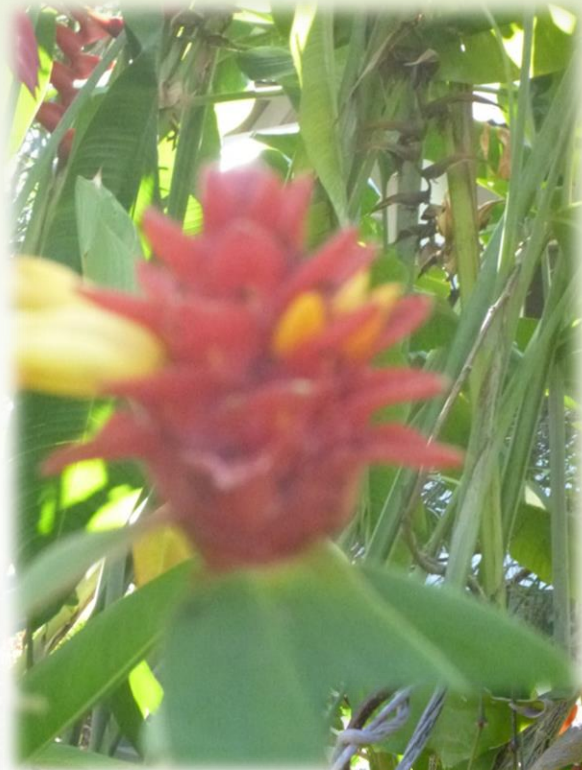




























Garden Visit. Julia Geljon & Chris McIvor.



October.









Garden Visit.



September.
Tracey Watts,
Margaret & Adrian Sloodjes









ROGI Meeting Presenters



ROGI Redland
Organic
Growers Inc
www.rogi.com.au



Kate Wall.
Sustainable Gardening.

Kemp Killerby: November.





Photos sourced for 2017



 Redland
Organic
Growers Inc

www.rogi.com.au



Oakland Street Community Gardens





Ian Burrows
Mt Cotton Farm
Field Trip









George and Judy Allen Garden Visit



Jill & Ian Nixon





Maree Manby with Polypore Fungi



Karragarra Sea Markets
& Community Gardens
& MacLay Island Field
Trip











Green Heart Fair

























Photos sourced for 2018



 Redland
Organic
Growers Inc

www.rogi.com.au



Currambin Eco Village Field Trip.

















Smelling the Jonquils



Seed Savers Group Meeting



Lara Britts Garden Visit







Chook Discussion at
May Round Robin Talks.

Chris McIvor Soil Talk

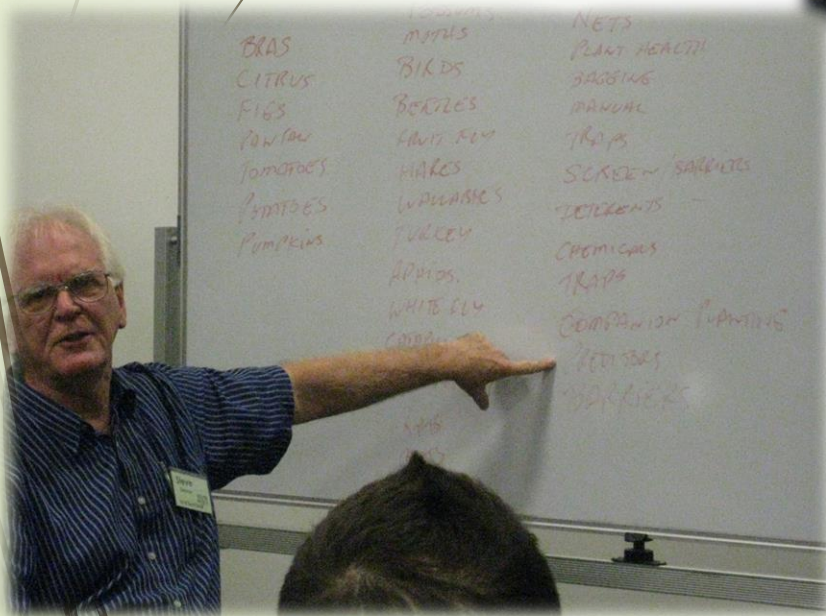
Library Ladies



Wax Wrap Making



Steve Gaynor Talk on Bugs



Living Green Expo







Creating a box veggie garden ROGI and Indigiscapes Indigi Kids







Hare Krishna Field Trip







Hare Krishna



Hare Krishna



Green Heart Fair







Francke Latter's Garden visit





Oakland Street Community Garden Open Day





Pal Jurvancz Garden Visit





Leong & Karina Lays Garden Visit









Ruth Bolomey
Garden Visit
& Makeover







Anne Gibson “the Microgardener”.



Annette Scibilia – “Brisbane Certified Organic Meats”.





ROGI thanks its members and friends
for their generous offering of their
gardens for our garden visits.

We apologise for those we missed in
this photo PowerPoint.

We look forward to sharing many more
garden visits, events and activities
and field trips in the next 10 years.

Wishing you all a very happy and healthy
Christmas and a wonderful year of gardening
ahead.

The ROGI Committee 2018.



**Redland
ROGI Organic
Growers Inc**
www.rogi.com.au

